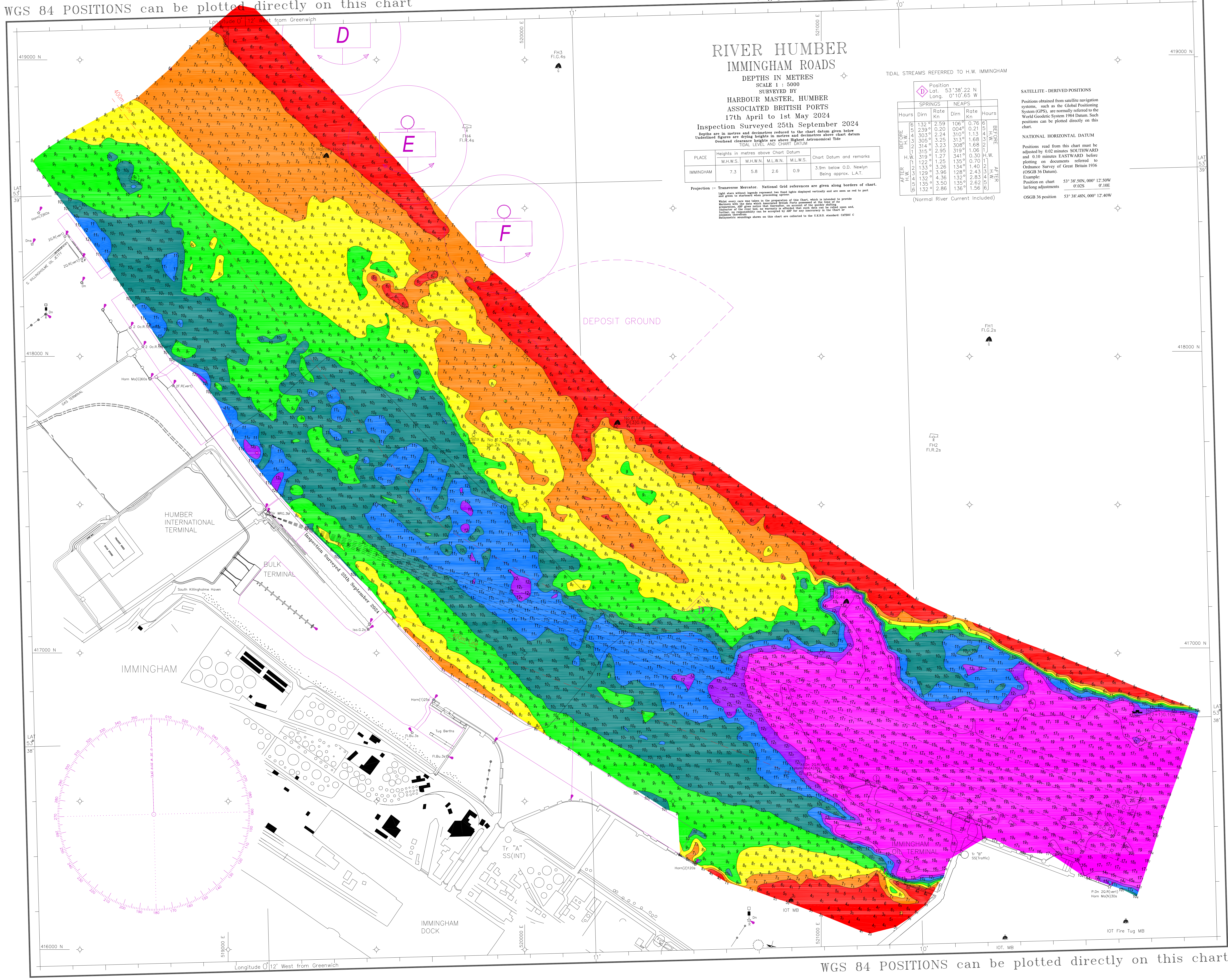


WGS 84 POSITIONS can be plotted directly on this chart

© Copyright 2024. All rights reserved. No part of this product may be reproduced in any form (including photocopying or by electronic means) without prior permission.



RIVER HUMBER IMMINGHAM ROADS

DEPTHS IN METRES
SCALE 1 : 5000

SURVEYED BY
HARBOUR MASTER, HUMBER
ASSOCIATED BRITISH PORTS
17th April to 1st May 2024

Inspection Surveyed 25th September 2024
Depths are in metres and decimetres referred to the chart datum given below
Undertimed figures are drying heights in metres and decimetres above chart datum
Overhead clearance heights are above Highest Astronomical Tide

PLACE	Heights in metres above Chart Datum				Chart Datum and remarks
	M.H.W.S.	M.H.W.N.	M.L.W.N.	M.L.W.S.	
IMMINGHAM	7.3	5.8	2.6	0.9	3.9m below O.D. Newlyn Being approx. L.A.T.

Projection: Transverse Mercator. National Grid references are given along borders of chart and given to eastward, west, northing and south.

Light stars without legends represent sea mine lights displayed retro-reflective and are seen or not in part and given to eastward, west, northing and south.

When every care was taken in the preparation of this chart, which is intended to provide Mariners with the data which are essential to their safe navigation, the publisher does not accept any liability for any error or omission, however caused, which may result in any loss or damage, and the user is advised to verify the accuracy of the data and to take every precaution for their own safety.

TIDAL STREAMS REFERRED TO H.W. IMMINGHAM

Hours	SPRINGS		NEAPS		Hours
	Dirn	Rate Kn	Dirn	Rate Kn	
BEFORE	132°	2.59	106°	0.76	6
H.W.	239°	0.20	004°	0.21	6
BEFORE	303°	2.24	310°	1.13	3
H.W.	305°	3.25	313°	1.68	3
BEFORE	314°	3.23	308°	1.68	3
H.W.	315°	2.95	319°	1.06	1
BEFORE	319°	1.27	341°	0.30	1
H.W.	122°	1.25	135°	0.70	1
BEFORE	133°	3.26	134°	1.40	2
H.W.	129°	3.96	128°	2.43	2
BEFORE	132°	4.36	132°	2.83	2
H.W.	135°	3.50	135°	2.62	2
BEFORE	132°	2.86	136°	1.56	2
H.W.					

SATELLITE - DERIVED POSITIONS
Positions obtained from satellite navigation systems, such as the Global Positioning System (GPS), are normally referred to the World Geodetic System 1984 Datum. Such positions can be plotted directly on this chart.

NATIONAL HORIZONTAL DATUM
Positions read from this chart must be adjusted by 0.02 minutes SOUTHWARD and 0.10 minutes EASTWARD before plotting on documents referred to Ordnance Survey of Great Britain 1936 (OSGB 36 Datum).

Example:
Position on chart 53° 38' 50N, 000° 12' 50W
lat/long adjustments 0.02S 0.10E
OSGB 36 position 53° 38' 48N, 000° 12' 40W

WGS 84 POSITIONS can be plotted directly on this chart